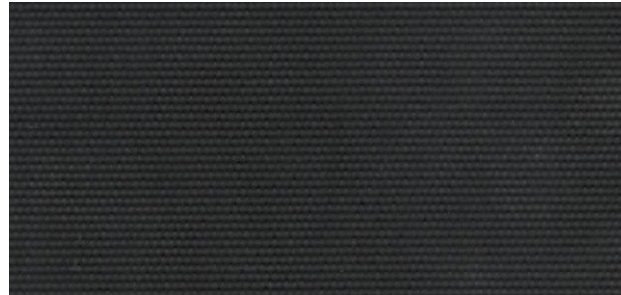


03802 AS



Product	Product category	Coating
PTFE GLASS FABRIC	HEAVY BELTING SERIES	Carbon Filled PTFE

Properties	Metric		Imperial	
Standard width(s) <i>Please ask for other widths</i>	2000, 2600	mm	78.8, 102.4	inches
Nominal thickness	0,67	mm	0.0264	inches
Weight	1100	gr/m ²	32.44	oz/sq yd
PTFE content	44	%	44	%
Tensile strength	4500	N/5 cm	514	lbs/inches
Surface resistance	< 100	kohm/sq	< 100	kohm/sq
Elongation at break	7	%	7	%
Temperature resistance	-150 to +260	°C	-238 to +500	°F

We have developed specially formulated fluoropolymer coating on a wide range of woven fiberglass products for use in the carpet industry. The resultant fabrics has best release properties and longer life times than similar products on the market. Different structural weaving types offer several types of impression of the glass fabrics to finished products.

Applications: Conveyor belting or release sheets for PVC backed carpets, door mats baking and rubber curing.

The product does not contain banned substances as described in RoHS directive and will not affect RoHS compliance.



This product has been manufactured in a facility certified by ISO 9001 Quality Management System.

Note: Nominal thickness, weight and tensile strength values are typical and are not intended as a specification minimum.

Nominal thickness tolerance: ±0,04 mm - Weight tolerance g/m² = ±%5 - Tensile strength tolerance -%10

All technical data are based on average values. These values are not intended for use in preparing specifications. Technical information contained herein are based on test results FIBERFLON believes to be reliable, but they are not to be construed in any manner as warranties expressed.

All data is subject to change without notice.