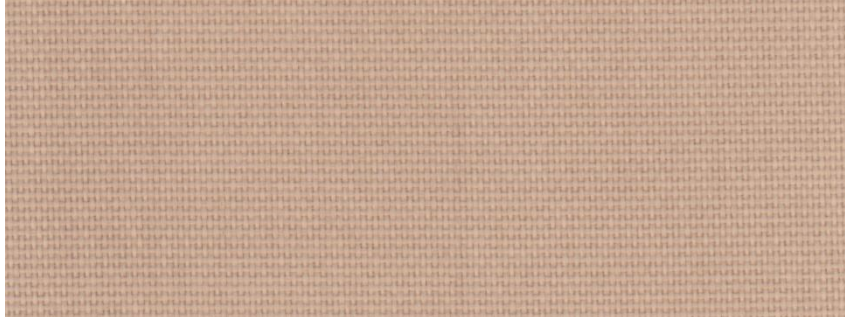


# 141.36



Product	Product category	Coating
PTFE GLASS FABRIC	STANDARD SERIES	PTFE

Properties	Metric		Imperial	
Standard width(s) <i>Please ask for other widths</i>	1000, 1500, 2000, 2600, 3500	mm	39.5, 59.1, 78.8, 102.4, 137.8	inches
Nominal thickness	0,35	mm	0.0138	inches
Weight	680	gr/m <sup>2</sup>	20.06	oz/sq yd
PTFE content	57	%	57	%
Tensile strength	3500	N/5 cm	400	Ibs/ins
Temperature resistance	-150 to +260	°C	-238 to +500	°F

These products provide a superior non-stick surface to achieve performance in a wide variety of applications with a lower cost alternative to Fiberflon's Premium Series.

The product can be used in direct contact with food. The product does not contain banned substances as described in RoHS directive and will not affect RoHS compliance.



This product has been manufactured in a facility certified by ISO 9001 Quality Management System.

Note: Nominal thickness, weight and tensile strength values are typical and are not intended as a specification minimum.

Nominal thickness tolerance: ±0,02 mm - Weight tolerance g/m<sup>2</sup> = ±%5 - Tensile strength tolerance -%10

All technical data are based on average values. These values are not intended for use in preparing specifications. Technical information contained herein are based on test results FIBERFLON believes to be reliable, but they are not to be construed in any manner as warranties expressed.

All data is subject to change without notice.