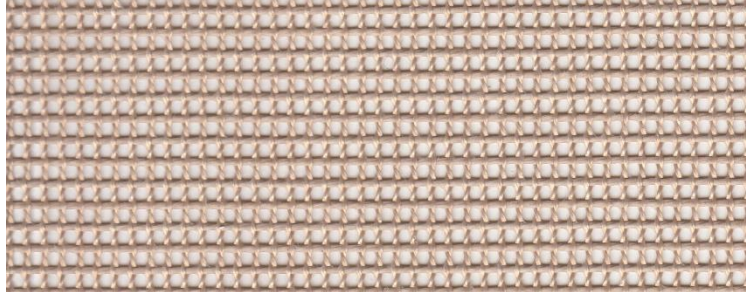


# 9004



Product	Product category	Coating
PTFE GLASS FABRIC	OPEN MESH SERIES	PTFE

Properties	Metric		Imperial	
Standard width(s) <i>Please ask for other widths</i>	2050, 2650, 3200, 3650, 5250	mm	81, 104.5, 126, 143.8, 206.7	inches
Nominal thickness	0,80	mm	0.0314	inches
Weight	470	gr/m <sup>2</sup>	13.86	oz/sq yd
Mesh size	2 x 2	mm	0.078 x 0.078	inches
PTFE content	29	%	29	%
Open area	60	%	60	%
Tensile strength	1500	N/5 cm	171	lbs/inches
Elongation	< 1	% at 7 kg/cm	< 1	% at 40 lbs/in
Temperature resistance	-150 to +260	°C	-238 to +500	°F

**Excellent properties of Fiberflon Open Mesh Belts:**

Outstanding temperature resistance, Resistant to corrosive agents, Low thermal mass, Controlled porosity, Superior non-stick surface, easy to clean, High dielectric strength, Dimensional stability, Non-toxic, Superior tracking. The product does not contain banned substances as described in RoHS directive and will not affect RoHS compliance.



This product has been manufactured in a facility certified by ISO 9001 Quality Management System.

Note: Nominal thickness, weight and tensile strength values are typical and are not intended as a specification minimum.

Nominal thickness tolerance: ±0,1 mm - Weight tolerance g/m<sup>2</sup> = ±%5 - Tensile strength tolerance -%10

All technical data are based on average values. These values are not intended for use in preparing specifications. Technical information contained herein are based on test results FIBERFLON believes to be reliable, but they are not to be construed in any manner as warranties expressed.

All data is subject to change without notice.