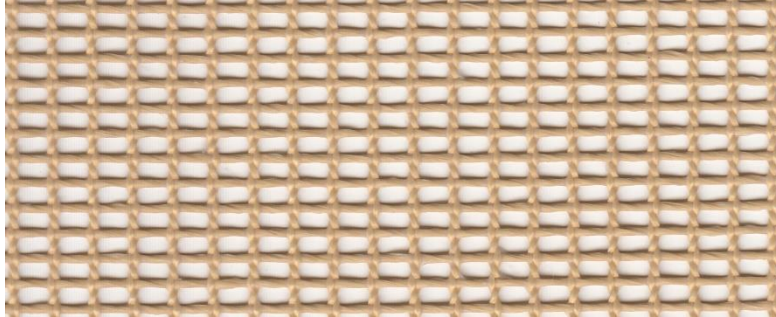


9007



Product	Product category	Coating
PTFE KEVLAR® FABRIC	OPEN MESH SERIES	PTFE

Properties	Metric		Imperial	
Standard width(s) <i>Please ask for other widths</i>	3350	mm	132	inches
Nominal thickness	1,00	mm	0.0393	inches
Weight	450	gr/m ²	13.27	oz/sq yd
Mesh size	2 x 4	mm	0.078 x 0.157	inches
PTFE content	49	%	49	%
Open area	46	%	46	%
Tensile strength	5000	N/5 cm	571	lbs/inches
Elongation	< 1	% at 7 kg/cm	< 1	% at 40 lbs/in
Temperature resistance	-73 to +220	°C	-100 to +428	°F

Excellent properties of Fiberflon Open Mesh Belts:

Outstanding temperature resistance, Resistant to corrosive agents, Low thermal mass, Controlled porosity, Superior non-stick surface, easy to clean, High dielectric strength, Dimensional stability, Non-toxic, Superior tracking. The product does not contain banned substances as described in RoHS directive and will not affect RoHS compliance.



This product has been manufactured in a facility certified by ISO 9001 Quality Management System.

Note: Nominal thickness, weight and tensile strength values are typical and are not intended as a specification minimum.

Nominal thickness tolerance: ±0,1 mm - Weight tolerance g/m² = ±%5 - Tensile strength tolerance -%10

All technical data are based on average values. These values are not intended for use in preparing specifications. Technical information contained herein are based on test results FIBERFLON believes to be reliable, but they are not to be construed in any manner as warranties expressed.

All data is subject to change without notice.