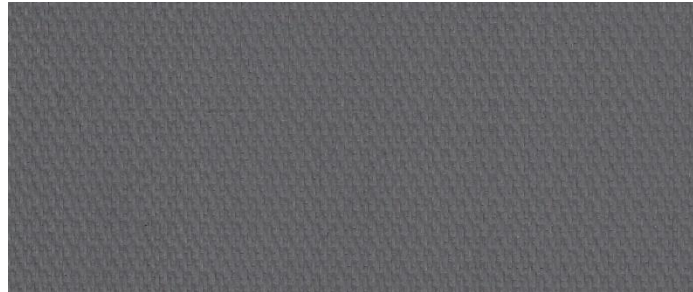


CHEMIFLEX 440-2SC



Product	Product category	Coating
PTFE GLASS FABRIC	CHEMIFLEX SERIES	PTFE

Properties	Metric		Imperial	
Standard width(s) <i>Please ask for other widths</i>	1525	mm	60	inches
Nominal thickness	0,40	mm	0.0157	inches
Weight	620	gr/m ²	18.14	oz/sq yd
PTFE content	31	%	31	%
Tensile strength - warp x weft	3500 x 2600	N/5 cm	400 x 297	Ibs/inches
Tear strength - warp x weft	240 x 230	N	54 x 52	Ibs
Temperature resistance	-150 to +316	°C	-238 to +600	°F

This PTFE / glass composite is designed for use in removable blankets / insulation jackets as weather/chemical resistant barrier. This economic grade fabric is easily sewn and is flexible enough to conform to intricate shapes. The PTFE coating is extremely resistant to most industrial chemicals.

Features: PTFE / Fiberglass composite, both side grey colored PTFE, flame retardant, very resistant to oil, greases and many other petroleum products, excellent ozone and weather resistance. This PTFE / fiberglass composite can be used for production of flexible insulation jackets and fabric expansion joints.

Special colors available on request.

The product does not contain banned substances as described in RoHS directive and will not affect RoHS compliance.



This product has been manufactured in a facility certified by ISO 9001 Quality Management System.

Note: Nominal thickness, weight and tensile strength values are typical and are not intended as a specification minimum.

Nominal thickness tolerance: ±0,03 mm - Weight tolerance g/m² = ±%5 - Tensile strength tolerance -%10

All technical data are based on average values. These values are not intended for use in preparing specifications. Technical information contained herein are based on test results FIBERFLON believes to be reliable, but they are not to be construed in any manner as warranties expressed.

All data is subject to change without notice.