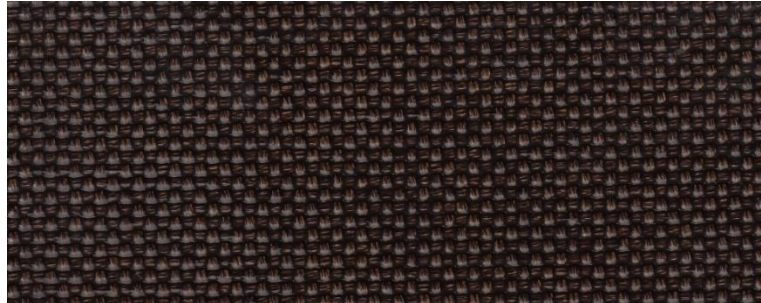


FIBERTEX 1000



Product	Product category	Coating
PTFE GLASS FABRIC FLEXIBLE COMPOSITE	FIBERTEX SERIES	PTFE

Properties	Metric		Imperial	
Standard width(s) <i>Please ask for other widths</i>	1.600	mm	63	inches
Nominal thickness	0,83	mm	0.0327	inches
Weight	1.120	gr/m ²	33.03	oz/sq yd
PTFE content	46	%	46	%
Tear strength - diagonal	800	N	180	Ibs
Tear strength - warp x weft	550 x 650	N	124 x 146	Ibs
Tensile strength - warp x weft	7.000 x 6.500	N/5 cm	800 x 742	Ibs/inches
Temperature resistance	-150 to +316	°C	-238 to +600	°F

Fibertex fabric expansion joint composites:

High quality woven fiberglass fabrics coated with a specially formulated fluoropolymer coating designed to provide enhanced flex properties and excellent high temperature performance, fire and chemical resistance, release, and weather ability properties for non-metallic expansion joints.

The product does not contain banned substances as described in RoHS directive and will not affect RoHS compliance.



This product has been manufactured in a facility certified by ISO 9001 Quality Management System.

Note: Nominal thickness, weight and tensile strength values are typical and are not intended as a specification minimum.

Nominal thickness tolerance: ±0,05 mm - Weight tolerance g/m² = ±%5 - Tensile strength tolerance -%10

All technical data are based on average values. These values are not intended for use in preparing specifications. Technical information contained herein are based on test results FIBERFLON believes to be reliable, but they are not to be construed in any manner as warranties expressed.

All data is subject to change without notice.